



GAT MONTHLY MEMBERSHIP PROGRESS REPORT

Results as of: 4/30/2024

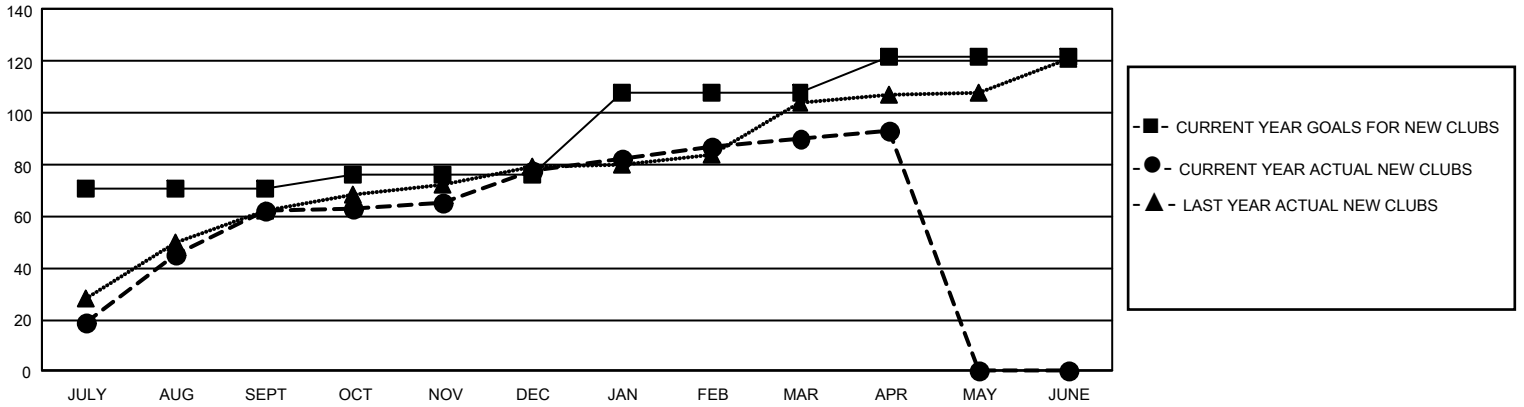
GMT Constitutional Area 6 - I, Group G

REPORT DOES NOT INCLUDE CLUBS IN UNDISTRICTED AREAS.

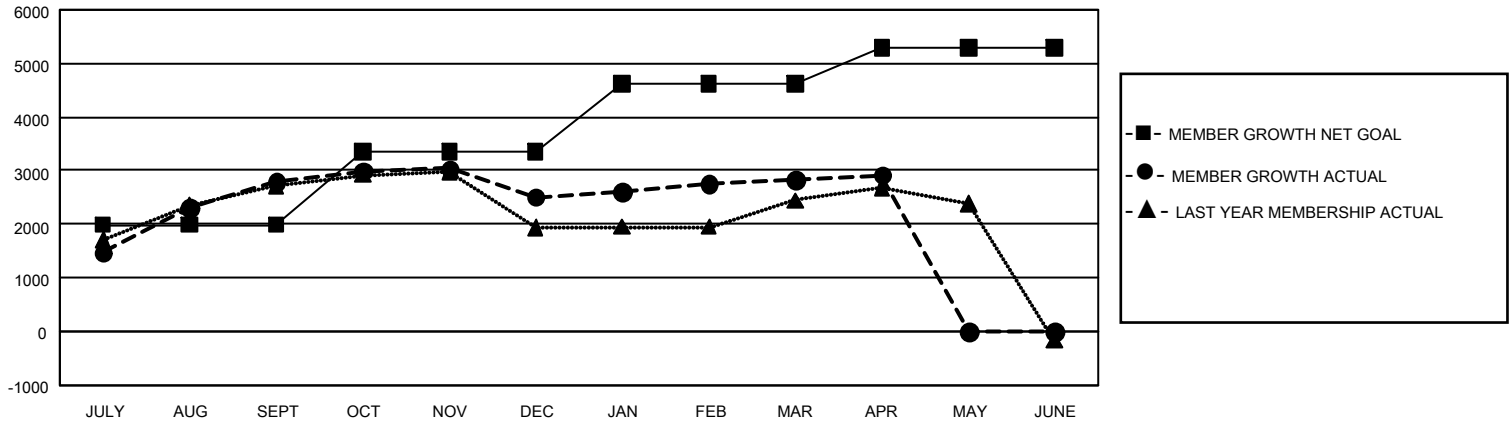
Clubs			
RESULTS FOR 2023-2024			
QUARTER	NEW CLUB GOAL	NEW CLUBS	DROPPED CLUBS
JULY/AUG/SEPT	213	62	19
OCT/NOV/DEC	15	16	40
JAN/FEB/MAR	96	12	8
APR/MAY/JUNE	42	3	1

Members			
RESULTS FOR 2023-2024			
QUARTER	MEMBER GROWTH NET GOAL	MEMBER GROWTH ACTUAL	DROPPED MEMBERS ACTUAL (including transfers)
JULY/AUG/SEPT	1990	4,392	1,364
OCT/NOV/DEC	1370	1,779	1,993
JAN/FEB/MAR	1255	1,072	584
APR/MAY/JUNE	675	366	234

GOALS AND ACTUAL NEW CLUBS CUMULATIVE



GOALS AND ACTUAL MEMBERS CUMULATIVE



DROPPED CLUBS: 68	774 CLUBS OF 1,140 ADDED 1 OR MORE NEW MEMBERS	GENDER DISTRIBUTION	
		MALE 27,683 (67.98%) FEMALE 13,031 (32.00%) NON BINARY 1 (0.00%) PREFER NOT TO ANSWER 5 (0.01%)	
DROPPED MEMBERS		CLICK HERE FOR CUMULATIVE MEMBERSHIP DATA	
DECEASED 105 CLUB CANCELLED 1,059 OTHER 3,009 TOTAL 4,173	TOTAL FAMILY UNIT MEMBERS 19,079 FAMILY MEMBERS PAYING HALF DUES 11,516		